



## MEMORANDUM

TO: Honorable Mayor and City Council, Project Management Team  
c/o Jeff Hulsether, PE – City Engineer

FROM: Scott D. Hedlund, PE, PMP

DATE: May 11, 2016

RE: Brainerd Lakes Regional Airport Utility Extension  
***Bi-Monthly Project Status Update***  
SEH No. BRDMN 131759 20.00

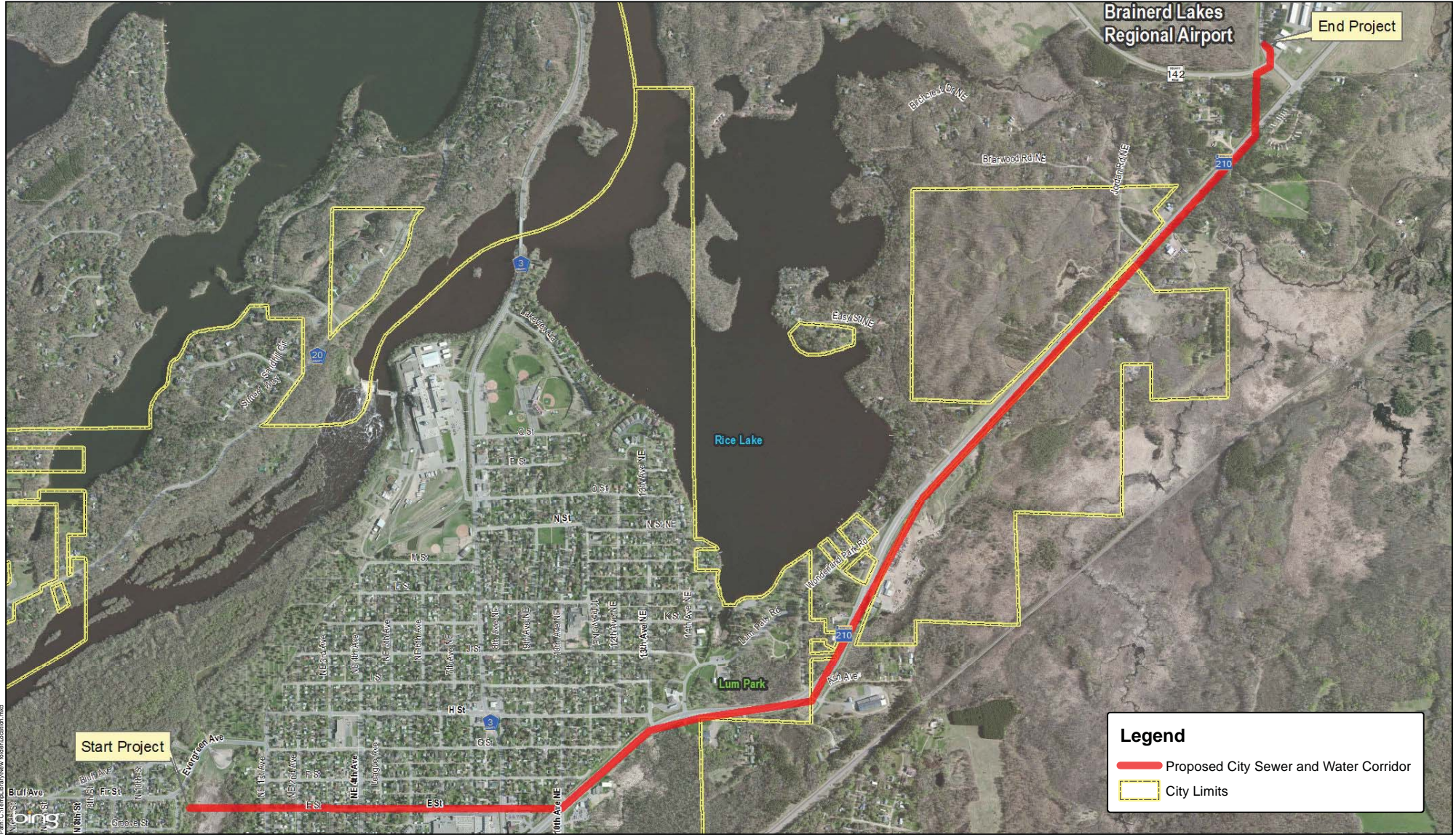
The following is an update on the status of the Construction Phase of the project:

- I. Construction Progress
  - A. Construction started April 11, 2016 in the Lum Park area.
  - B. Horizontal Directional Drilling (HDD) (Project Areas 1 & 2)
    1. Started April 14<sup>th</sup>
    2. **Installed 6-inch sewer force main between the new Lum Park lift station and E Street manhole between 8<sup>th</sup> and 9<sup>th</sup> Ave NE.**
      - a. **Still need to install the air release manhole at the 13<sup>th</sup> Avenue NE/ I Street intersection.**
      - b. HDD subcontractor struck a marked existing gravity sanitary sewer near the existing Lum Park lift station on 4/14/16; the damage has been repaired at the Contractor's expense.
      - c. Prime contractor struck a marked buried power cable near the intersection of E Street and TH 210 on 4/23/16 while digging a HDD receiving pit causing a brief power outage in the area; BPU crews restored power within an hour and repaired at the Contractor's expense.
    3. **Installed 200 foot stretch of 12-inch gravity sanitary sewer under Lum Park Road.**
    4. **Working on installing 6-inch sewer force main between Pine Shores Road and Jordan Road.**
    5. **12-inch gravity sewer installation along the south side of TH 210 between Lum Park and Pine Shores Road is planned to begin the end of the week of May 9<sup>th</sup> with a second HDD crew.**
    6. **Water main between the new booster station in Lum Park and along 13<sup>th</sup> Avenue NE is planned to begin the end of the week of May 9<sup>th</sup>.**
  - C. Jack Bore Steel Casings Under TH 210 (Project Area 1)

1. Sewer and water crossings approximately 400 feet east of Lum Park Road
    - a. **Ongoing dewatering and trench support system work.**
    - b. **Planning to start casing installations the week of May 9<sup>th</sup>.**
  - D. Lum Park lift station/booster station site (Project Area 1)
    - a. **Ongoing dewatering operations and trench support system work in preparation for deep lift station wetwell and manhole installation.**
  - E. Open cut sewer and water (Project Area 1)
    1. **Working on gravity sewer between the Lum Park lift station and TH 210.**
  - F. **E Street open cut sewer (Project Area 3)**
    1. **Pavement removals work is planned to start May 13, 2016.**
    2. **Utility work is planned to start May 16, 2016 starting League Ave working east.**
    3. **Work is planned to last several weeks with street closures.**
- II. Construction Staging
- A. The Contractor has conveyed the following construction schedule/staging plans (subject to change):
    1. **Ongoing deep excavation construction in Lum Park (Areas 1 & 2) for the next several weeks, then ongoing booster and lift station construction over the next few months.**
    2. **Continue pipe installation in Area 1 along and under TH 210 moving east from Lum Park.**
      - a. **Jack bores are planned sequentially moving east starting at Lum Park for the next couple of months.**
      - b. **HDD work will continue to move around along the TH 210 corridor and in Lum Park over the next several weeks.**
    3. **Start E Street open cut work between League Avenue and 9<sup>th</sup> Ave (Area 3) on May 13<sup>th</sup> with ongoing work for the next several weeks.**
    4. **Start sewer lining on E Street west of League Avenue (Area 4) in June.**
- III. External Communications
- A. The second monthly project update construction newsletter to property owners along the project corridor was distributed May 10<sup>th</sup>.
  - B. Project website → <http://www.sehinc.com/online/brd>
    1. Has monthly construction project update newsletters, project location map, PMT meeting minutes, City update memos, and basis of design report available for viewing and download.
- IV. Overall Schedule
- A. Construction
    1. City Council Award Construction Contract: February 22, 2015
    2. Notice To Proceed: March 17, 2016
    3. Preconstruction Conference: April 5, 2016
    4. Started Construction: April 11, 2016
    5. Weekly Construction Progress Meetings: Tuesdays at 9:30am, Lum Park (subject to change)
    6. Contract Construction Substantial Completion Date: October 21, 2016
    7. Contract Construction Final Completion Date: December 14, 2016
- V. Budget Status
- A. Construction Contract (low bid Tom's Backhoe Service): \$8,591,721.58
    1. **Applications For Payment**
      - a. **Through 4/30/16:**
        - (1) **Work Certified: \$482,972.08**
        - (2) **Retainage (5%): \$24,148.60**

- (3) **Paid: \$458,823.48 (pending City Council approval on 5/16/16)**
  - 2. **Change Orders:**
    - a. **Change Order No. 1 for \$9,750 for adding a necessary sewer force main air release manhole at the intersection of 13<sup>th</sup> Avenue NE and I Street is planned for City Council approval on 5/16/16.**
- B. Consultant budget (construction):
  - 1. Approved construction services contract: \$623,092.00.
  - 2. **Invoiced to date: \$73,308.87.**
  - 3. Scope changes:
    - a. The intensity of construction observation needed to date is higher than assumed for the consultant contract; contractor has been working 6 days a week during daylight hours; consultant contract is hourly and will continue to be monitored; a fee amendment request would be brought forward in the future if at such time overall construction observation hours are projected to be exceeded.

Attachment – project location map  
sh



**Legend**

- Proposed City Sewer and Water Corridor
- City Limits

Path: C:\Temp\Brainerd\New\UtilityLocation.mxd

Project: BRDMN 131759  
 Print Date: 5/8/2015  
 Map by: matsemmagel  
 Projection: Crow Wing County Coordinates  
 Source: Crow Wing County, MnDOT

**Project Location Map**  
 Brainerd Lakes Regional Airport Utility Extension  
 Brainerd, Minnesota

May 6, 2015

This map is neither a legally recorded map nor a survey map and is not intended to be used as one. This map is a compilation of records, information, and data gathered from various sources listed on this map and is to be used for reference purposes only. SEH does not warrant that the Geographic Information System (GIS) Data used to prepare this map are error free, and SEH does not represent that the GIS Data can be used for navigational, tracking, or any other purpose requiring exacting measurement of distance or direction or precision in the depiction of geographic features. The user of this map acknowledges that SEH shall not be liable for any damages which arise out of the user's access or use of data provided.