



## Project Update - TH 13 – 150<sup>th</sup> Street Improvements

### Project Contacts

Contractor - S.M. Hentges & Sons, Inc

Project Superintendent  
Steve Engstrom  
612-919-4655 (cell)  
952-494-5700 (office)

Project Superintendent  
Kevin Oldridge  
612-919-4679 (cell)

Lead Project Representative  
John Wichman - City of Savage  
612-490-8744 (cell)  
952-882-2675 (office)

Project Engineer  
Chris McKenzie – SEH  
952-912-2607 (direct)

The project field office is located in the Bethesda Church parking lot.

Construction will be completed by Fall 2016.

Please drive safely through the work zone!

*Future project updates will be provided online at [www.sehinc.com/online/13-150](http://www.sehinc.com/online/13-150).*

July 14, 2016 | Project Update No. 5

***Prior Lake side to begin construction on Monday, July 18th***

### Construction Activities

Beginning Monday, July 18<sup>th</sup>, 150<sup>th</sup> St, Estate and Glasgow on the Prior Lake side, or northwest side of TH 13 will close for construction. This is in addition to the 150<sup>th</sup> Street on the southeast, or Savage side, of TH 13 being closed. Both neighborhoods, Prior Lake and Savage sides, can gain access from TH 13 via 152<sup>nd</sup> St W for Savage, and Green Oaks Trail SE for Prior Lake.

Homeowners living on Estate, 150<sup>th</sup> and Glasgow Trail within the project area will be contacted by John Wichman or Kevin Oldridge individually for your driveway access information as the dynamic nature of construction occurs. The Estate, 150<sup>th</sup> and Glasgow Trail work will likely conclude in Mid-September.

***Please see the enclosed map for alternate routes.***

***The project team of MnDOT, Prior Lake and Savage has allowed the contractor's request to move the local streets in Prior Lake up, allowing the Contractor to get the overall project schedule back on track after the rain delays that have occurred this summer. We apologize for the late notice of the work, and thank you for your continued patience during construction.***

### Bethesda Church

Bethesda Church will continue to have to access via Cates Lake Drive from the south. 150<sup>th</sup> Street north of the Church will be closed for the month of July.

### The Overall Project

The project includes reconstruction of TH 13 and realignment of 150<sup>th</sup> Street. An overall layout of the project is provided below. For a more detailed view – this image and other information is available on the project website at [www.sehinc.com/online/13-150](http://www.sehinc.com/online/13-150).

## Project Contacts

Contractor - S.M. Hentges & Sons, Inc

Project Superintendent  
Steve Engstrom  
612-919-4655 (cell)  
952-494-5700 (office)

### Lead Project Representative

John Wichman - City of Savage  
612-490-8744 (cell)  
952-882-2675 (office)

### Project Engineer

Chris McKenzie - SEH  
952-912-2607 (direct)

The project field office is located in the Bethesda Church parking lot.

Construction will be completed by Fall 2016.

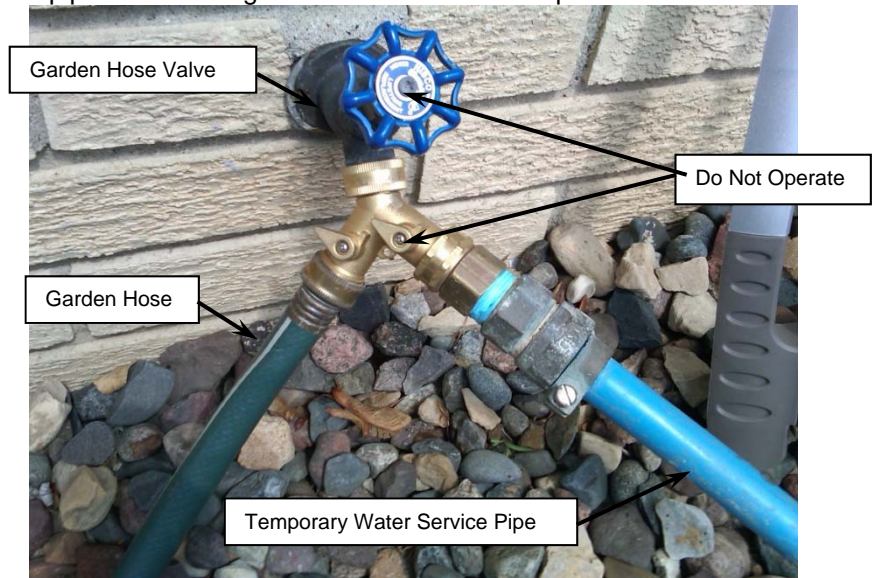
Please drive safely through the work zone!

*Future project updates will be provided online at [www.sehinc.com/online/13-150](http://www.sehinc.com/online/13-150).*

## Temporary Water

Some homes on 150<sup>th</sup>, Estate and Glasgow will be connected to temporary water during the construction. The contractor, SM Hentges will be installing the temporary water pipe along the boulevard, and connecting the homes to it through the hose spigot on the outside of your house.

The system will supply water to each house while the water mains in the street are being replaced. This system will connect to each house at the outside hose bib via a pipe similar to a garden hose shown in the photo below.



You may notice your tap water is warmer than usual. This is normal and happens because the water pipe is above ground rather than below. Additionally, water main reconstruction may cause rust colored water. This too is normal. Flush your faucets by running all of them at the same time for several minutes and this will remove the rust color.

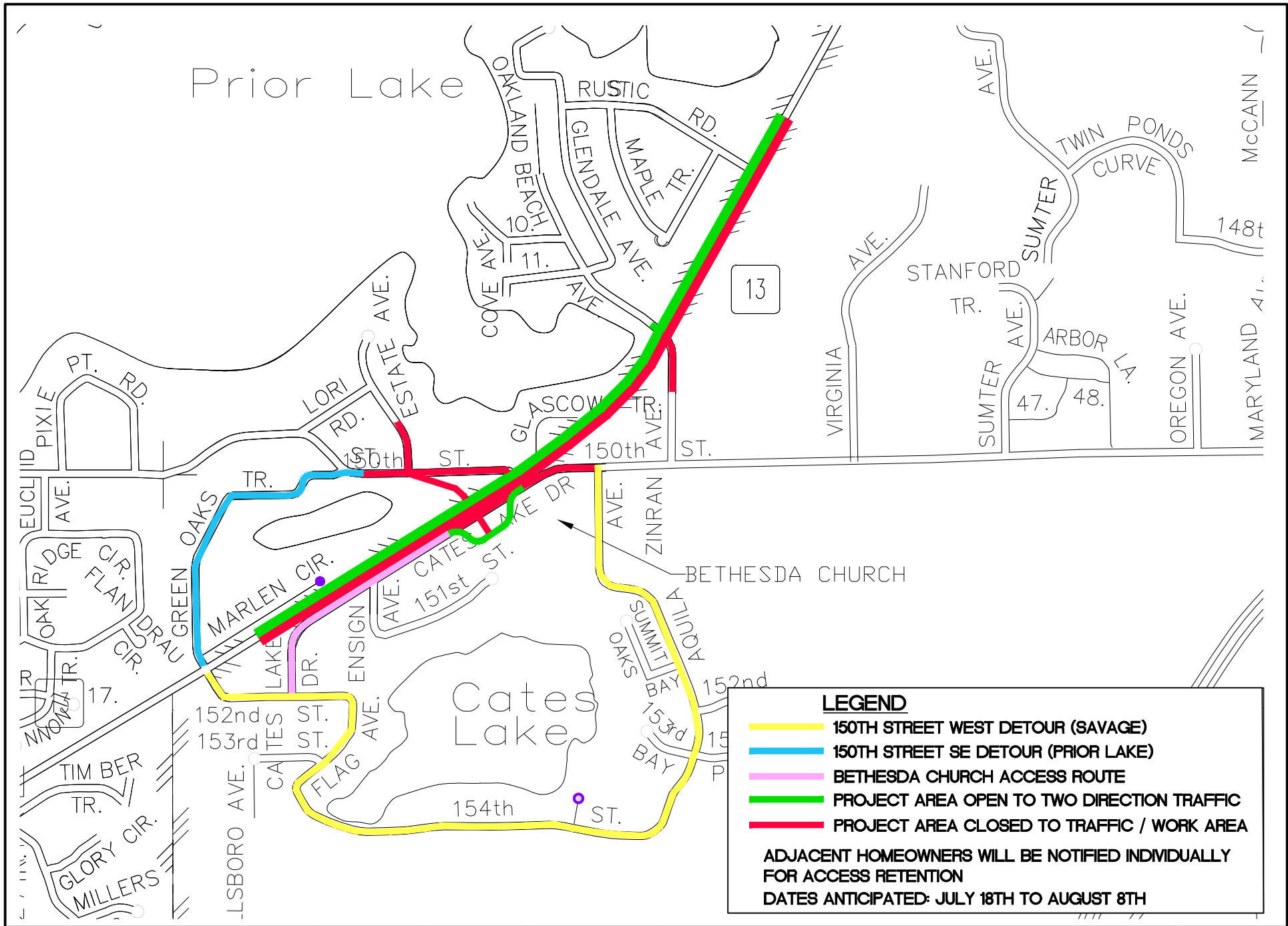
Depending on your house plumbing, your water softener may not work while you are connected to the temporary water system. If you have questions about your water softener, please call John Wichman. Please be careful of these above ground pipes when cutting your grass.

## Construction Site Safety

Please take care as you navigate through the work zone. Warn children to stay away from equipment, pipes and other materials that may be staged for installation. Be aware of heavy machinery operating in the work zone and the possibility of deep trenches or irregular ground surfaces in areas that work is occurring. The Contractor will make work areas safe each night before leaving the site.

Work zone speed limits will remain at 30mph. Access to all homes, businesses and schools will be maintained. We ask that you avoid bicycling on TH 13 due to the reduced lane widths and frequent construction traffic.

Trucks will be entering and exiting normal traffic patterns to serve the project. Please give the trucks lots of room, and don't follow them into the construction areas. The contractor may provide flaggers to direct traffic as necessary for the safety of both the motoring public and the workers.



					FILE NO. SAVAG133360	<p align="center"><b>Phase 2 Traffic Control</b>                  Savage and Prior Lake - TH 13 / 150th                  Street Intersection Reconstruction</p>	<p align="center"><b>EXHIBIT</b>                  NO. 2C</p>
					DATE: 7/13/16		