



Project Update - TH 13 – 150th Street Improvements

Project Contacts

Contractor - S.M. Hentges & Sons, Inc

Project Superintendent
Steve Engstrom
612-919-4655 (cell)
952-494-5700 (office)

Lead Project Representative
John Wichman - City of Savage
612-490-8744 (cell)
952-882-2675 (office)

Project Engineer
Chris McKenzie – SEH
952-912-2607 (direct)

The project field office is located in the Bethesda Church parking lot.

Construction will be completed by Fall 2016.

Please drive safely through the work zone!

Future project updates will be provided online at www.sehinc.com/online/13-150.

July 5, 2016 | Project Update No. 4

TRAFFIC CHANGE ON 150TH ST

Construction Activities

Beginning Monday, July 11th, the 150th Street intersection will no longer be accessible to the southeast, or Savage side, of TH 13.

Please see the map on the next page of this update for alternate routes.

Bethesda Church

Bethesda Church will have to access the parking lot via Cates Lake Drive from the south. 150th Street north of the Church will be closed for the month of July. The 150th connection to TH 13, on the southeast side, will be closed for the next few months.

Another Project Update will be published prior to the next traffic change, likely near the end of July.

The Overall Project

The project includes reconstruction of TH 13 and realignment of 150th Street. An overall layout of the project is provided below. For a more detailed view – this image and other information is available on the project website at www.sehinc.com/online/13-150.

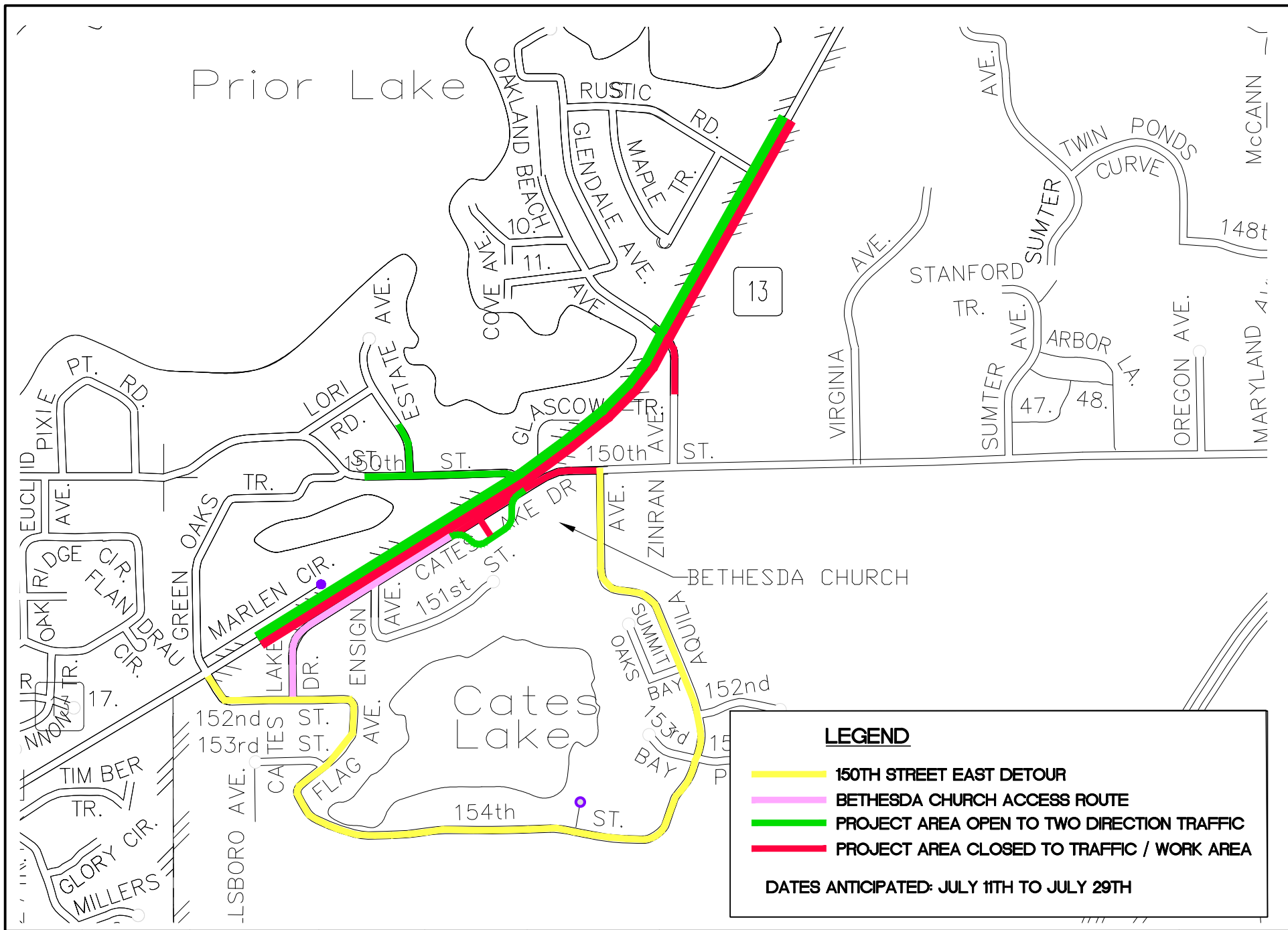
Construction Site Safety

Please take care as you navigate through the work zone. Warn children to stay away from equipment, pipes and other materials that may be staged for installation. Be aware of heavy machinery operating in the work zone and the possibility of deep trenches or irregular ground surfaces in areas that work is occurring. The Contractor will make work areas safe each night before leaving the site.

Work zone speed limits will remain at 30mph. Access to all homes, businesses and schools will be maintained. We ask that you avoid bicycling on TH 13 due to the reduced lane widths and frequent construction traffic.

Trucks will be entering and exiting normal traffic patterns to serve the project. Please give the trucks lots of room, and don't follow them into the construction areas. The contractor may provide flaggers to direct traffic as necessary for the safety of both the motoring public and the workers.





LEGEND

- 150TH STREET EAST DETOUR
- BETHESDA CHURCH ACCESS ROUTE
- PROJECT AREA OPEN TO TWO DIRECTION TRAFFIC
- PROJECT AREA CLOSED TO TRAFFIC / WORK AREA

DATES ANTICIPATED: JULY 11TH TO JULY 29TH



FILE NO.
SAVAG133360
DATE:
7/5/16

Phase 2 Traffic Control
Savage and Prior Lake - TH 13 / 150th
Street Intersection Reconstruction

**EXHIBIT
NO. 2B**